

**THE PARKS AND OPEN SPACES, LONDON BOROUGH OF HARROW  
PUBLIC SPACES PROTECTION ORDER 2023**

**This Order relates to specified parks and open spaces in the London Borough of Harrow**

1. In this Order:

**‘Anti-Social Behaviour’** refers to section 59 (2) (a)-(b) of the Anti-Social Behaviour, Crime and Policing Act 2014 and means: activities carried out, or which are likely to be carried out, in a public space which have a detrimental effect on the quality of life those in the locality. This also means behaviour likely to cause harassment, distress or alarm to one or more other person. This can include, but is not limited to, littering, verbal abuse, obstructing the highway, illegal drug use, urinating or, spitting

**‘The designated area’** refers to any public space to which the public or a part of the public has access (S 74(1) of the Anti-Social Behaviour, Crime and Policing Act 2014). This can be with payment, or with express or implied permission. This can include businesses and communal areas of housing blocks but excludes residential premises.

**‘Authorised officer’** refers to: police officer, police community support officer, or any other person designated to enforce the Order by London Borough of Harrow. You can require any authorised officers to produce authorisation before enforcing the Order.

2. The London Borough of Harrow, in accordance with Section 59 (7)(a) of the Anti-Social Behaviour, Crime and Policing 2014, identifies the following activities in the designated areas, highlighted in section 3 to 12 of this Order, as having had a detrimental impact on the quality of life of those in the locality, or it is likely that they will have such an effect

**3. Parks as shown highlighted on the attached plan in Appendix 3 (‘the designated area’)**

- Dog Control
- Driving vehicles on park land without prior permission
- Unauthorised activities

Due to the volume of reports of these activities and behaviours, the Council is satisfied that the effect, or likely effect, of the activities is, or is likely to be, of a persistent or continuing nature and these activities are unreasonable and justify the restrictions imposed by the notice and that it is in all the circumstances expedient to make this Order for the purpose of reducing anti-social behaviour in a public place.

The London Borough of Harrow, being thereby satisfied that the conditions in Section 59 of the Act have been met, hereby makes the following Order:

**4. Parks (in addition to Whole Borough requirements and prohibitions)**

As shown highlighted on the attached plan in Appendix 3 (‘the designated area’)

**Requirements - In all public spaces within this designated area, you are required to:**

**4.2 Dog control**

- a. Put the dog/s on a lead if directed by an authorised officer because they reasonably believe that the dog/s are causing distress to any other person or animal, or damage to any Council structure, equipment, tree, plant or turf

**Prohibitions - In all public spaces within this designated area, you are prohibited from:**

**4.3 Dog Control**

- a. As a person who is in charge of a dog(s), permitting the dog(s) to cause damage to any Council structure, equipment, tree, shrub, plant, turf or other Council property

#### **4.4 Driving vehicles on park land without prior permission**

- a Driving or riding any vehicle, motorcycle, moped, caravan or any other motor propelled vehicle in park grounds without prior permission from the Council. This does not include any space in the grounds set aside for use by vehicles, indicated by signs placed in conspicuous positions. This restriction shall not apply to any electrically powered scooter designed for people with restricted mobility, including those who are elderly or disabled.

#### **4.5 Unauthorised activities**

- a. Fishing, magnet fishing, removing fish, being in possession of fishing tackle or setting up for fishing in any of the designated area, without express approval from the parks team
- b. Setting up or using a camp site or sleeping area for the purposes overnight fishing outside of any area that may be designated for the purpose
- c. Lighting a fire or barbecue in any of the designated areas, unless prior express written consent has been provided by the Local Authority for a barbecue or fire to be lit and used at a particular time and place
- d. Any feeding of birds (including ducks or waterfowl) or depositing of food or animal feed, except in any area marked for this purpose. This does not apply to the feeding of any animals that you may own or be responsible for.
- e. Interfering with or causing damage to site signage, bins, fences, gates, stiles or other site amenity provisions within any of the designated areas
- f. Using or being in possession of metal detectors and/or digging implements in any of the designated areas shall be guilty of an offence unless they can show express approval from the parks team.
- g. Being responsible for placing and use of CCTV/trail cams, lighting units or other fixed filming devices.
- h. Using the ponds and lakes for open water swimming, boating or wading without prior permission from London Borough of Harrow.
- i. Any unauthorised felling or damage to trees and shrubs
- j. Any foraging for fungi, or fruit, flowers or other plant material in any of the identified nature reserves

#### **5. Duration**

The Order comes into effect on 1/2/24 and will be in effect for a period of three years to 31/1/27.

If there is need to do so, the Council may shorten, extend or vary the order at any time in the three years. If the Council wants to extend or vary the Order, they must consult appropriate community representatives, the police and owners of the affected land on the variation.

#### **6. Appeal**

If any 'interested person' (a person living in, working in, or regularly visiting the affected area) wishes to appeal this Order, they must do so on one of two grounds (s 66 of the Anti-Social Behaviour, Crime and Policing Act 2014):

- 1) The Council did not have the legal power to make the Order.
- 2) The Council did not follow all the requirements listed in Chapter 2 of the Anti-Social Behaviour, Crime and Policing Act 2014.

The interested person(s) must appeal the Order with an application to the High Court within six weeks of the Order being made.

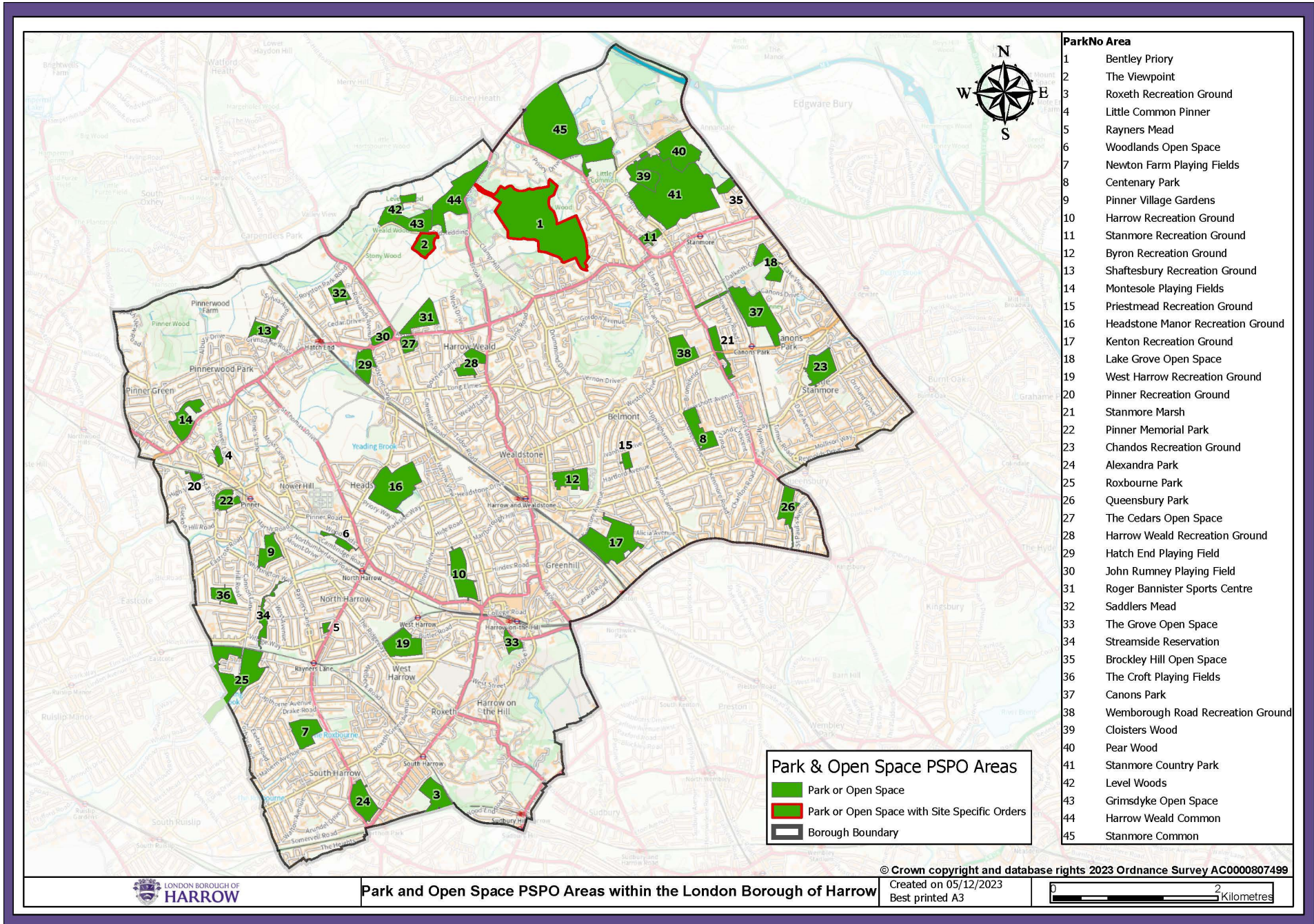
#### **7. Information**

Further information about the PSPO and matters related within it, can be found at [www.harrow.gov.uk/licensing](http://www.harrow.gov.uk/licensing)

#### **8. Appendices**

1 Designated area - Parks and open spaces

Appendix 1  
 Designated area -Parks and open spaces



ParkNo	Area
1	Bentley Priory
2	The Viewpoint
3	Roxeth Recreation Ground
4	Little Common Pinner
5	Rayners Mead
6	Woodlands Open Space
7	Newton Farm Playing Fields
8	Centenary Park
9	Pinner Village Gardens
10	Harrow Recreation Ground
11	Stanmore Recreation Ground
12	Byron Recreation Ground
13	Shaftesbury Recreation Ground
14	Montesole Playing Fields
15	Priestmead Recreation Ground
16	Headstone Manor Recreation Ground
17	Kenton Recreation Ground
18	Lake Grove Open Space
19	West Harrow Recreation Ground
20	Pinner Recreation Ground
21	Stanmore Marsh
22	Pinner Memorial Park
23	Chandos Recreation Ground
24	Alexandra Park
25	Roxbourne Park
26	Queensbury Park
27	The Cedars Open Space
28	Harrow Weald Recreation Ground
29	Hatch End Playing Field
30	John Rumney Playing Field
31	Roger Bannister Sports Centre
32	Saddlers Mead
33	The Grove Open Space
34	Streamside Reservation
35	Brockley Hill Open Space
36	The Croft Playing Fields
37	Canons Park
38	Wemborough Road Recreation Ground
39	Cloisters Wood
40	Pear Wood
41	Stanmore Country Park
42	Level Woods
43	Grimsdyke Open Space
44	Harrow Weald Common
45	Stanmore Common